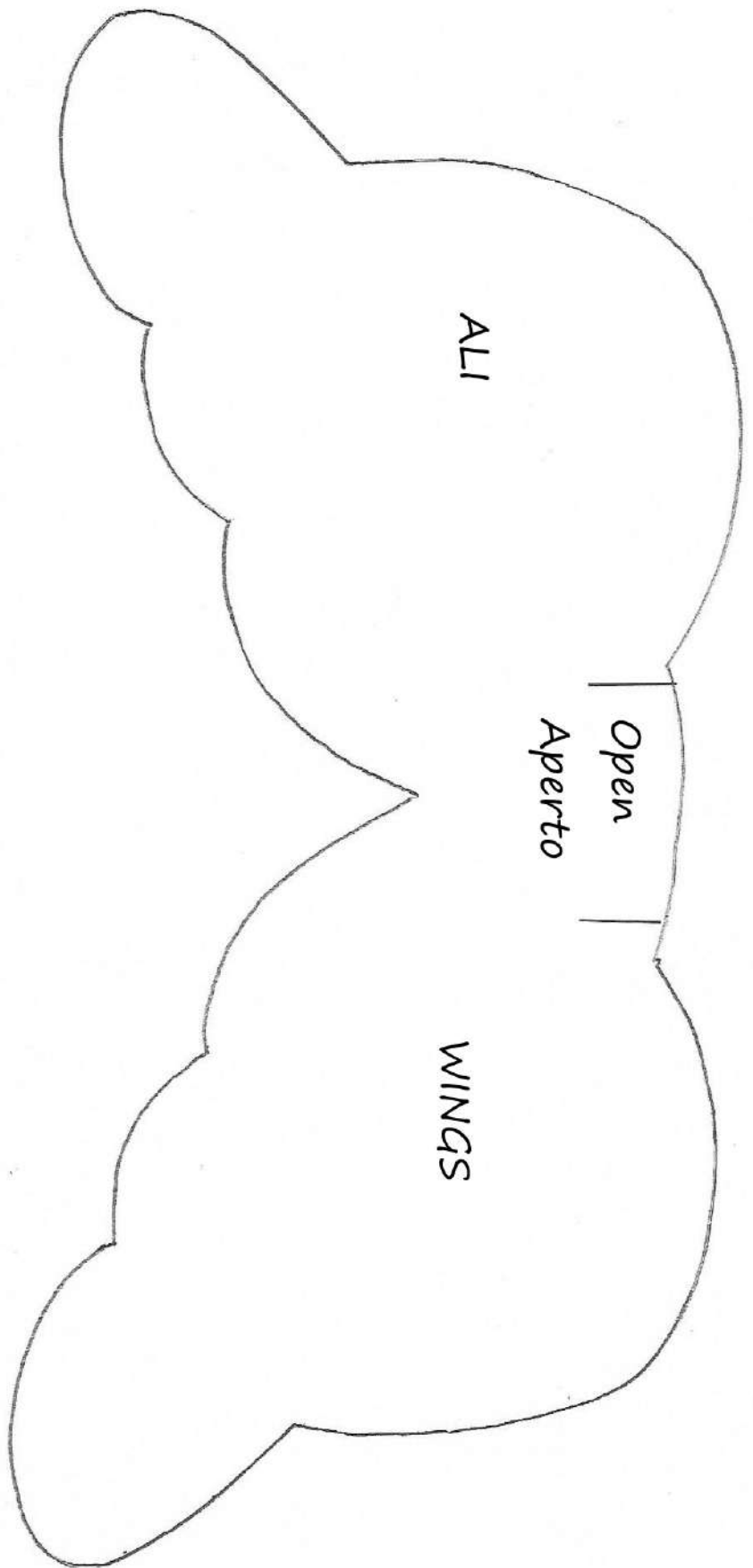


CORPO
BODY

↓
PIEGA DELLA STOFFA
PLACE ON FOLD



ALI

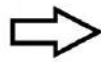
Open
Aperto

WINGS

Camicia - Lui
Davanti
Shirt - He
Front

Place on Fold

Lato ripiegatura stoffa







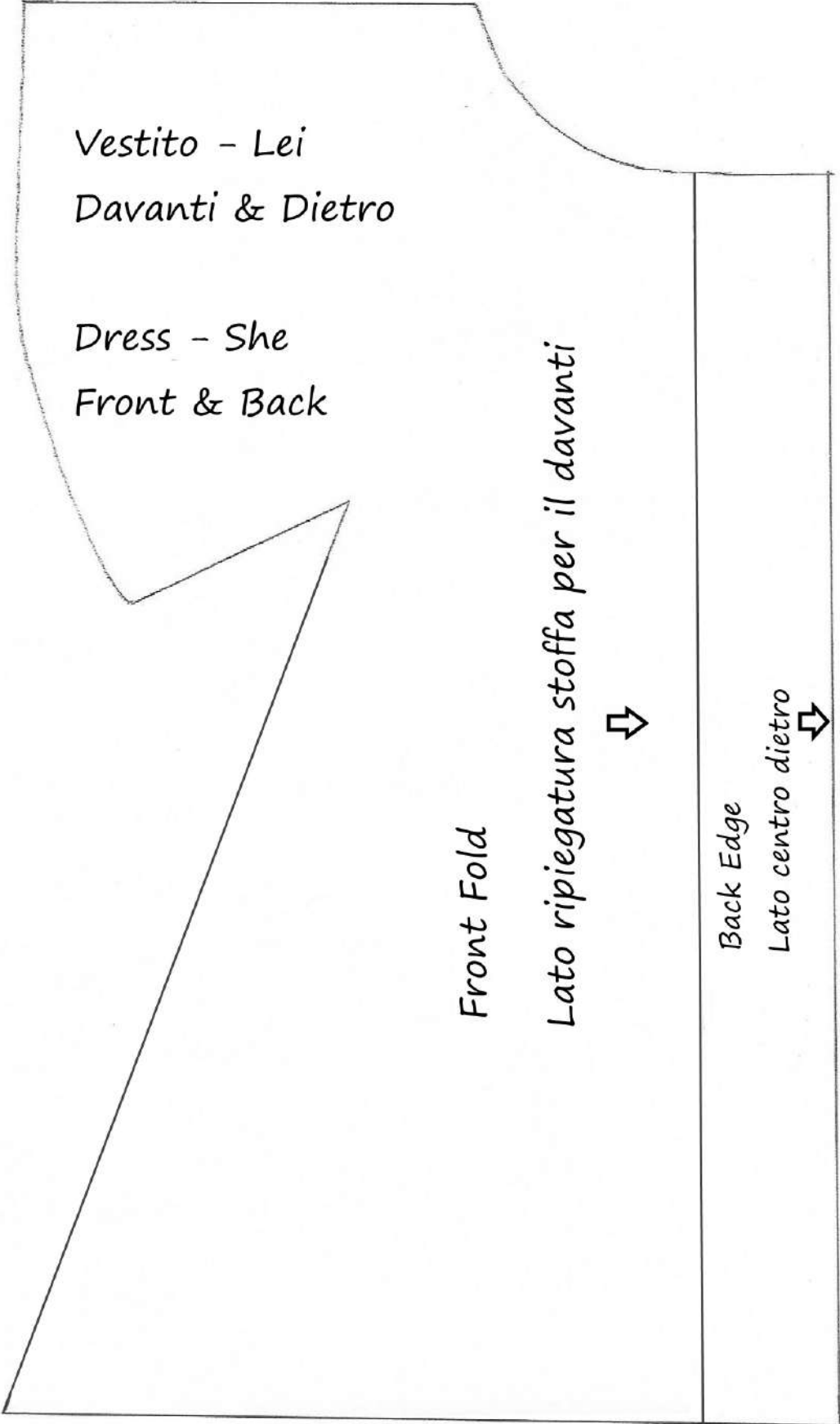
A hand-drawn pattern for the back of a shirt. The pattern is a large, irregular shape. The top edge is mostly horizontal, with a small notch on the right side. The right edge is vertical. The bottom edge is horizontal. The left edge is curved, with a sharp point at the bottom. The text is written in the upper left quadrant of the pattern.

Camicia - Lui

Dietro

Shirt - He

Back



Vestito - Lei
Davanti & Dietro

Dress - She
Front & Back

Front Fold

Lato ripiegatura stoffa per il davanti



Back Edge

Lato centro dietro

